

Date	Week No.	SO3 %	NaEq %	Fine m2/kg	I-Set min	F-Set h.min	Water %	Sound mm	False mm	I-3D MPa	I-7D MPa	I-28D MPa
10/10	41	2.4	0.41	375	135	3:00	27.6	1.0	10	36.9	47.3	61.4
02/10	39	2.2	0.41	370	135	3:15	27.6	1.0	10	35.6	47.0	59.7
23/09	38	2.5	0.41	375	135	3:00	27.6	1.0	12	36.9	48.2	60.8
16/09	37	2.5	0.42	380	135	3:00	27.3	2.0	11	36.5	47.9	61.3
29/08	35	2.4	0.42	385	120	3:15	27.5	1.0	12	36.6	47.0	62.0
22/08	34	2.5	0.41	375	120	3:00	27.5	2.0	12	35.9	47.2	61.3
15/08	33	2.8	0.45	455	120	3:00	28.2	2.0	14	40.3	49.1	61.4
08/08	32	2.6	0.42	360	135	3:15	27.5	1.0	16	35.4	46.8	58.5
30/07	30	2.5	0.43	375	135	3:15	27.5	2.0	10	37.4	48.9	61.6
23/07	29	2.4	0.42	360	135	3:00	27.3	1.0	11	35.1	45.8	60.1
15/07	28	2.4	0.41	365	135	3:15	27.1	1.0	11	35.7	47.2	60.8
09/07	27	2.3	0.42	370	135	3:15	27.5	2.0	12	37.2	48.5	62.2
02/07	26	2.2	0.42	380	150	3:30	27.5	1.0	10	36.5	47.2	60.5
27/06	25	2.4	0.41	365	135	3:15	27.5	2.0	9	35.4	46.4	60.0
19/06	24	2.4	0.41	365	135	3:00	27.5	1.0	10	35.3	46.1	59.3
12/06	23	2.5	0.42	375	105	2:45	27.5	2.0	11	36.8	47.2	60.4
05/06	22	2.4	0.39	375	120	3:15	27.6	2.0	12	34.5	46.8	63.6
27/05	21	2.5	0.39	370	120	3:15	27.8	1.0	13	33.5	46.3	63.2
20/05	20	2.5	0.38	375	135	3:00	28.1	2.0	13	33.9	45.8	63.9
13/05	19	2.6	0.41	365	135	3:15	28.4	1.0	10	34.7	46.0	61.9
08/05	18	2.5	0.39	370	135	3:30	28.7	1.0	8	33.9	45.8	61.6
02/05	17	2.6	0.39	380	135	3:45	28.7	2.0	11	32.4	43.8	60.4
Mean		2.5	0.4	376	131	03:00	27.7	1.5	11	35.7	46.9	61.2
StdDev		0.1	0.0	19	10	10:48	0.4	0.5	2	1.7	1.2	1.4
Min		2.2	0.4	360	105	02:45	27.1	1.0	8	32.4	43.8	58.5
Max		2.8	0.5	455	150	03:45	28.7	2.0	16	40.3	49.1	63.9
NZS 3122:1995 Type GP Specifications												
		3.5			45	10:00		5.0			25.0	40.0
		maximum			minimum	maximum		maximum			minimum	minimum
		maximum			minimum	maximum		maximum			minimum	minimum

Issue Date: 13-Nov-08
Report ID: 08CC841


Rebecca Keogh
Technical Manager


Bradley Ranger
Physical Technician



This Laboratory is accredited by International Accreditation New Zealand
All tests reported herein have been performed in accordance with the
laboratory's scope of accreditation. Holcim New Zealand is registered
for the production and distribution of cement in accordance with ISO 9002:1994
This Test Report may not be reproduced except in full



Holcim GP

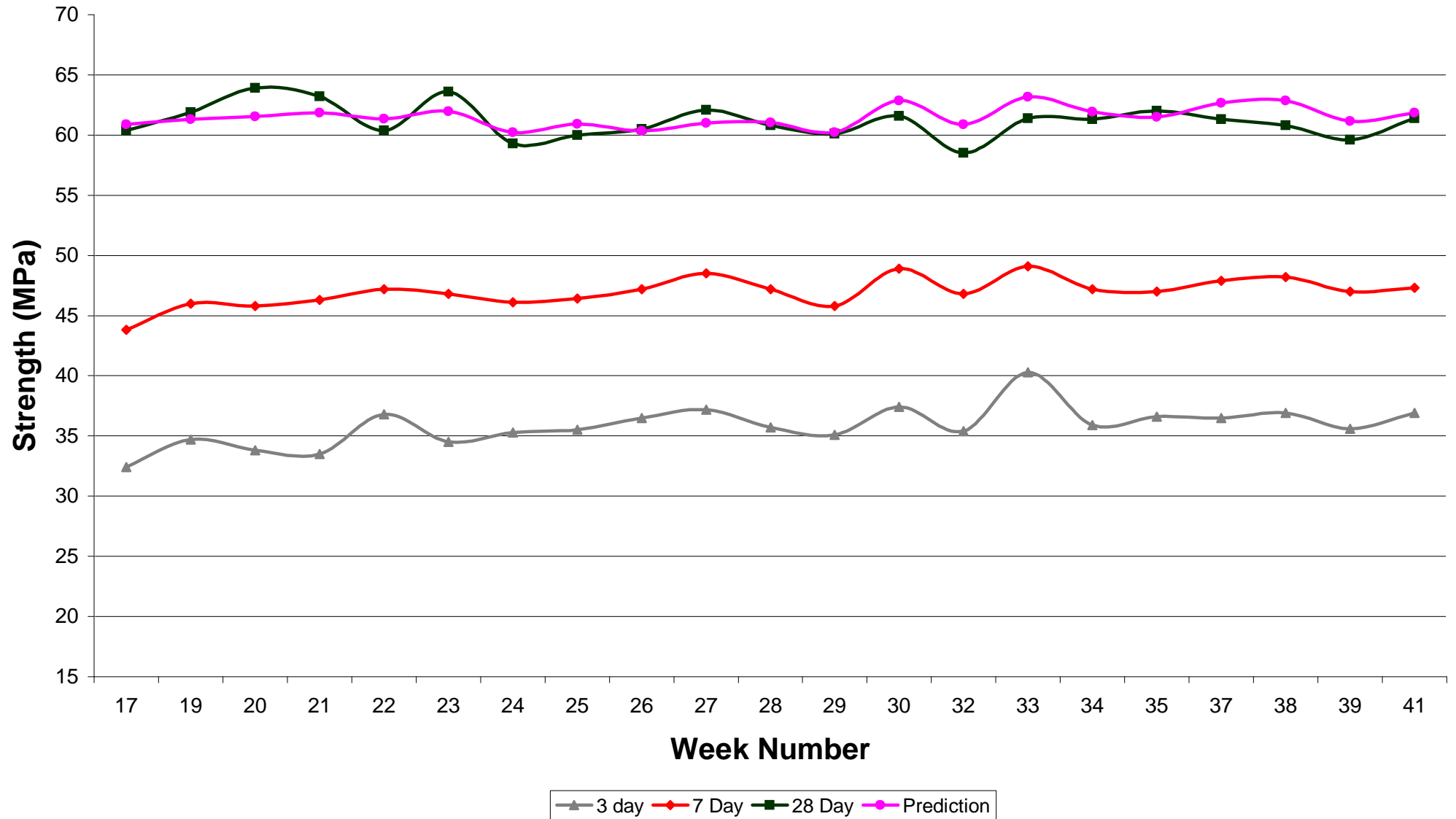
Holcim GP is a general purpose cement. It is tested in accordance with NZS 3122:1995. Details of the test methods used are given below, along with the abbreviations used on the first page of this report.

Abbreviation	Parameter Tested		For further information contact:
SO3	Sulphur Trioxide	XRF Spectrometry in accordance with AS 2350.2:1991	Rebecca Keoghan
NaEq	Soda Equivalent	XRF Spectrometry in accordance with AS 2350.2:1991	Technical Manager
FCaO	Free Lime	Titrimetry using BS EN 196.2 1995	PO Box 245, Westport
Fine	Fineness	Rigden Apparatus in accordance with AS 2350.8:1999	Phone (bus.) (03) 789 5849
Sound	Soundness	Le Chatelier method using AS 2350.5:2007	Fax (bus.) (03) 789 5892
I-set	Initial Set	Vicat Apparatus using AS 2350.4:2007	Mobile 021 333 652
F-set	Final Set	Vicat Apparatus using AS 2350.4:2007	E.mail rebecca.keoghan@holcim.com
Water	Normal Consistency	Vicat Apparatus using AS 2350.3:2007	
FALSE	False Set	Vicat Apparatus using NZS 3122:1995 Appendix D	
I-3D	Mortars at 3 Days	Compressive Strength using AS 2350. 11:2007	
I-7D	Mortars at 7 Days	Compressive Strength using AS 2350. 11:2007	
I-28D	Mortars at 28 Days	Compressive Strength using AS 2350. 11:2007	

NOTE: The AS 2350 series of standard cited above were all adopted, with minor amendments, by NZS 3122:1995

Holcim GP ex Dunedin

ISO Mortar Compressive Strengths - Week 17 to Week 41 2008



Holcim GP ex Dunedin

Concrete Compressive Strengths - Week 17 to Week 41 2008

